

Importing Configuration Files

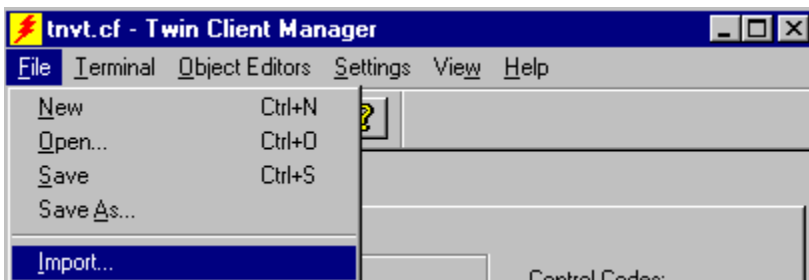
- How to Convert to PowerNet Twin Client from the
discontinued Wavelink Spectrum24 Standalone Telnet Clients
with the PowerNet Import Feature



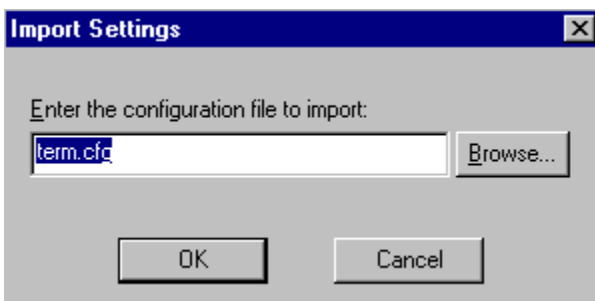
Connect, Inc.
1701 Quincy Avenue, Suites 5 & 6, Naperville, IL 60540
Ph: (630) 717-7200 Fax: (630) 717-7243
www.connectrf.com

Importing Configuration Files

In Twin Client Manager, select **Import** from the **File** menu.

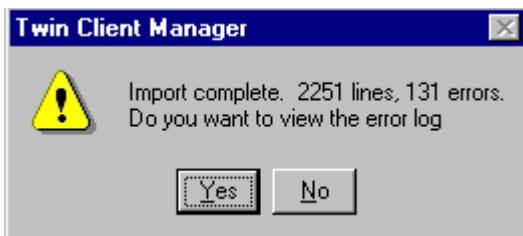


Enter or browse for the configuration file to import.



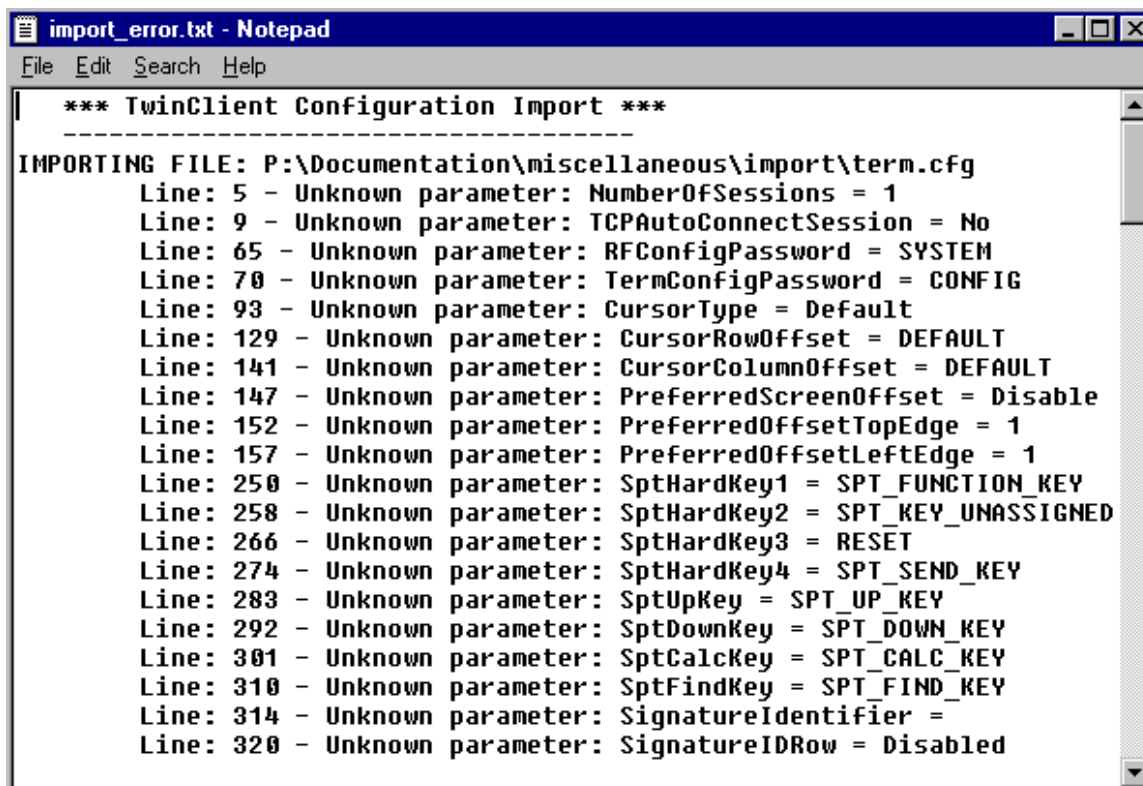
Click on **OK**.

The following error message appears.



Click on **Yes**.

The screen below appears.



```
import_error.txt - Notepad
File Edit Search Help
*** TwinClient Configuration Import ***
-----
IMPORTING FILE: P:\Documentation\miscellaneous\import\term.cfg
Line: 5 - Unknown parameter: NumberOfSessions = 1
Line: 9 - Unknown parameter: TCPAutoConnectSession = No
Line: 65 - Unknown parameter: RFConfigPassword = SYSTEM
Line: 70 - Unknown parameter: TermConfigPassword = CONFIG
Line: 93 - Unknown parameter: CursorType = Default
Line: 129 - Unknown parameter: CursorRowOffset = DEFAULT
Line: 141 - Unknown parameter: CursorColumnOffset = DEFAULT
Line: 147 - Unknown parameter: PreferredScreenOffset = Disable
Line: 152 - Unknown parameter: PreferredOffsetTopEdge = 1
Line: 157 - Unknown parameter: PreferredOffsetLeftEdge = 1
Line: 250 - Unknown parameter: SptHardKey1 = SPT_FUNCTION_KEY
Line: 258 - Unknown parameter: SptHardKey2 = SPT_KEY_UNASSIGNED
Line: 266 - Unknown parameter: SptHardKey3 = RESET
Line: 274 - Unknown parameter: SptHardKey4 = SPT_SEND_KEY
Line: 283 - Unknown parameter: SptUpKey = SPT_UP_KEY
Line: 292 - Unknown parameter: SptDownKey = SPT_DOWN_KEY
Line: 301 - Unknown parameter: SptCalcKey = SPT_CALC_KEY
Line: 310 - Unknown parameter: SptFindKey = SPT_FIND_KEY
Line: 314 - Unknown parameter: SignatureIdentifier =
Line: 320 - Unknown parameter: SignatureIDRow = Disabled
```

The “Unknown parameter” message indicates that the error is not recognized.

Either the configuration file was imported automatically or the user must create an object to resolve the issue.

About This Document

Please let us know about any errors in this document at:
<http://207.241.78.223/isoxpert/calltrak.nsf/WebTracking?OpenForm>.