



AirLinc

PowerNet AirLinc Middleware Development Tool

PowerNet AirLinc is a member of the PowerNet DataLinc family of middleware development tools.

AirLinc provides a powerful and easy to use development environment designed to assist in the creation of Mobile and Serial Device Control Applications.



AirLinc's GUI scripting language provides full COM and ODBC support, including SQL transactional commands, and Stored Procedure

Calls, yet requires no VB, C, or C++ programming.

Developed for a Client / Server Environment

AirLinc Server is designed for installation into a Microsoft NT, XP, or Windows 2000 O/S. AirLinc Workstations, accessing the server, may be installed on a Windows '95, '98, NT, XP, or 2000 platform. This environment utilizes complete NT/2000/XP Security and permits project development collaboration across the network.

PowerNet OpenAir Windows included with AirLinc

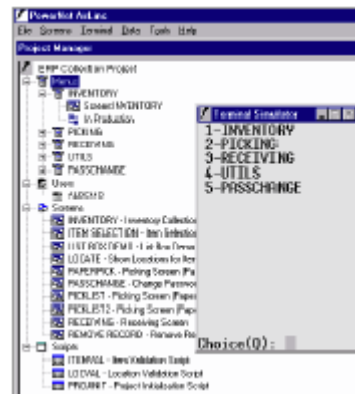
AirLinc includes PowerNet OpenAir Windows. PowerNet OpenAir Windows works with the leading AP (Access Point) and terminal radio manufacturers to provide RF connectivity for all major 2.4GHz and 900 MHz RF data collection devices.

Patented event processing software enables PowerNet OpenAir Windows to achieve unmatched speed and performance and

efficiently serve large numbers of mobile terminals in a real-time environment. AirLinc places the processing load where the processing power resides - on the PowerNet OpenAir Windows.

AirLinc Application Interface

AirLinc uses a Menu Bar and Project Manager Screen to provide the tools to create an AirLinc project. The Project Manager Screen summarizes the structure of the current project and the relationship between Menus, Users, Screens, and Scripts.



AirLinc Menus

The AirLinc Menus category provides the ability to establish the available routines for an AirLinc project and with which screen each routine is associated. Menus are defined by the

user and may be developed for countless types of collection routines, including typical warehousing routines, such as Inventory, Picking, Receiving, and Shipping.

AirLinc Users

Users are established individually and may be assigned to specific working groups within the Secure Menus Form. Individual users and/or groups are in turn assigned to the established application routines developed under the Menus category. This Terminal User Security ensures that only authorized personnel will have access to necessary application routines.

As an RF terminal user starts an AirLinc session, a login is required. Only those users given access to an application individually or through a group will have access to the application routine on the RF terminal screen.

AirLinc Screens

RF Terminal Screens may be designed to prompt the operator for the necessary information required by the application routine. AirLinc's Mobile Screen design utility uses drag and drop techniques to position Prompt Objects, Text Objects, and List Box Objects on user defined screen sizes. Prompts can be defined to accept Alpha and/or Numeric characters from Keyed and/or Scanned entries.



Screens may use scripting to enhance the data collection effort. The AirLinc Scripting Language consists of 40 separate commands that may be used to conduct specialized activities.



AirLinc Project Scripts

Unlike scripts developed specifically for a Prompt Object, Text Object, or Screen, Project Scripts may be created for the purpose of satisfying repetitive tasks. For example, rather than creating a validation script for the Item prompt in every screen, a Project Script may be called from the Item prompt to validate against the Item table. This feature adds programming efficiency and reduces the amount of time required for testing.

Data Browser

AirLinc's Data Browser Utility provides the ability to view existing 32 bit ODBC data sources that may be referenced within an AirLinc Script. Additionally, the Data Browser Utility provides the ability to copy your working database and create a Visual Fox Pro test database with the same structure and/or records as the original. This feature means that you can develop AirLinc projects off-site with a copy of your client's database. Also, by working with a copy of the working database, unintended changes to your working database can be avoided while developing your AirLinc project.

AirLinc Simulator

The AirLinc Simulator provides the ability to view the developed AirLinc project exactly as it would be presented on an RF Terminal Screen. Its primary use is for testing an AirLinc project to gain feedback on the progress of development; however, the simulator is also an effective tool when demonstrating to clients or training RF Terminal users.